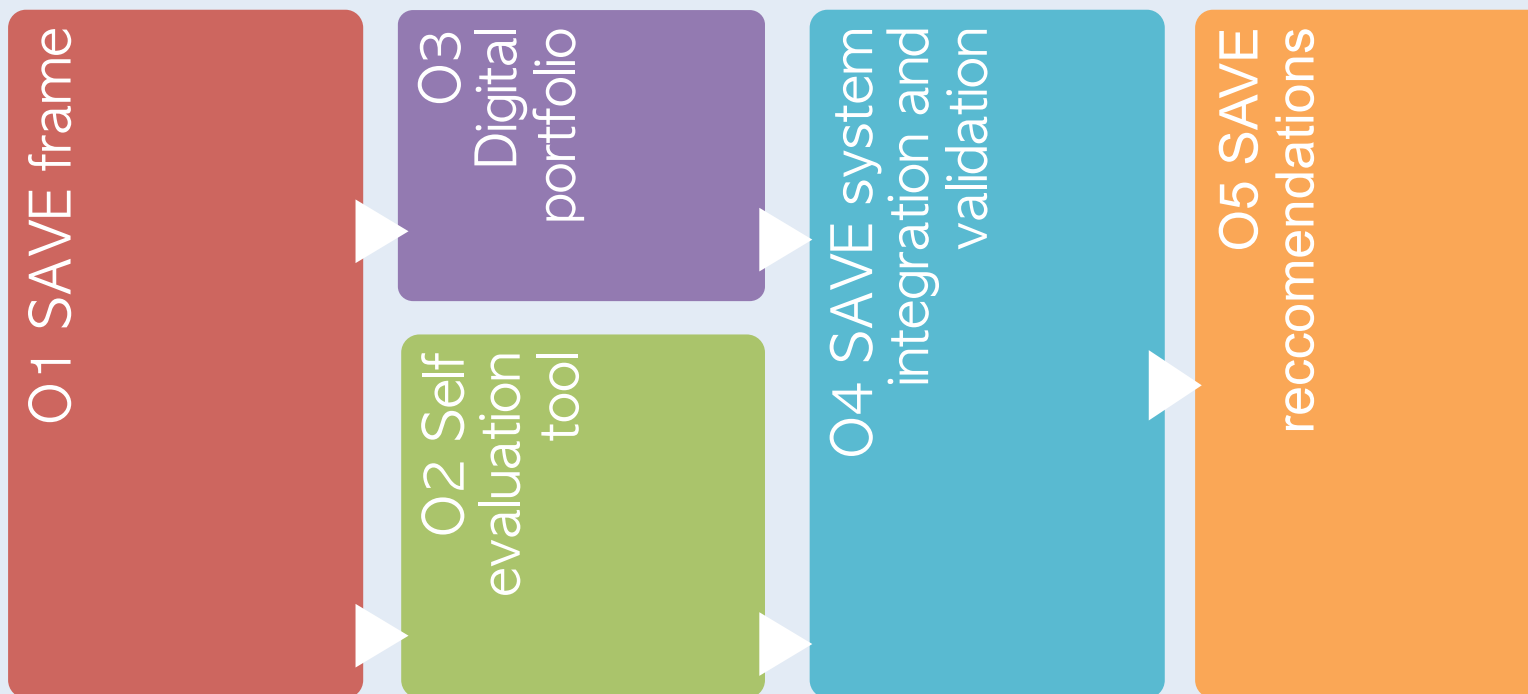


Self Awareness, evaluation and motivation system Enhancing learning and integration and contrast ELS and NEET
2014-1-IT01-KA202-002472

01 -SAVE RESEARCH

PM / QA / EVALUATION



Valorisation

MULTIPLIER EVENTS

O1 SAVE frame

Knowledge Sharing dei progetti, risorse, esperienza
SAVE clipping base

Analisi comparativa su: sfide, scenari e drivers rilevanti, con particolare riferimento ai contesti/territori di sperimentazione e di impatto a supporto del trasferimento, adattamento ed integrazione delle risorse SAVE.

Le evidenze di ricerca (**nazionali e comparative; desk e in field**) rappresentano la **cornice concettuale, metodologica e operativa** dello sviluppo ed integrazione del sistema in quanto va a realizzare:

- l'integrazione organica di risorse, pratiche, esperienze, strumenti rispetto ai fabbisogni e contesti specifici;
- una analisi di scenario nazionale e comparativa- finalizzata ad approfondire sia i **fabbisogni attuali ed emergenti** sia ad approfondire i temi specifici della prevenzione e del contrasto dei fenomeni NEET e DROP OUT nei **diversi e differenziati target/segmenti**
- il quadro di riferimento per lo sviluppo e integrazione del **sistema e modello SAVE** rispetto alle sue variabili e **dimensioni chiave**

DESK Reports, Programs, Projects,
IN Focus Group, meetings,
FIELD questionnaire

SAVE
Research

Introduction
Compared National Reports
Overview
Focus on iVET, VET and education system
ESL and NEET main drivers and dimensions
Program and projects
Focus on key SAVE dimensions: guidance &/ orienteering; self-awareness/evaluation; personalization; ICT
Conclusions & main frame of evidences for SAVE design
Resources

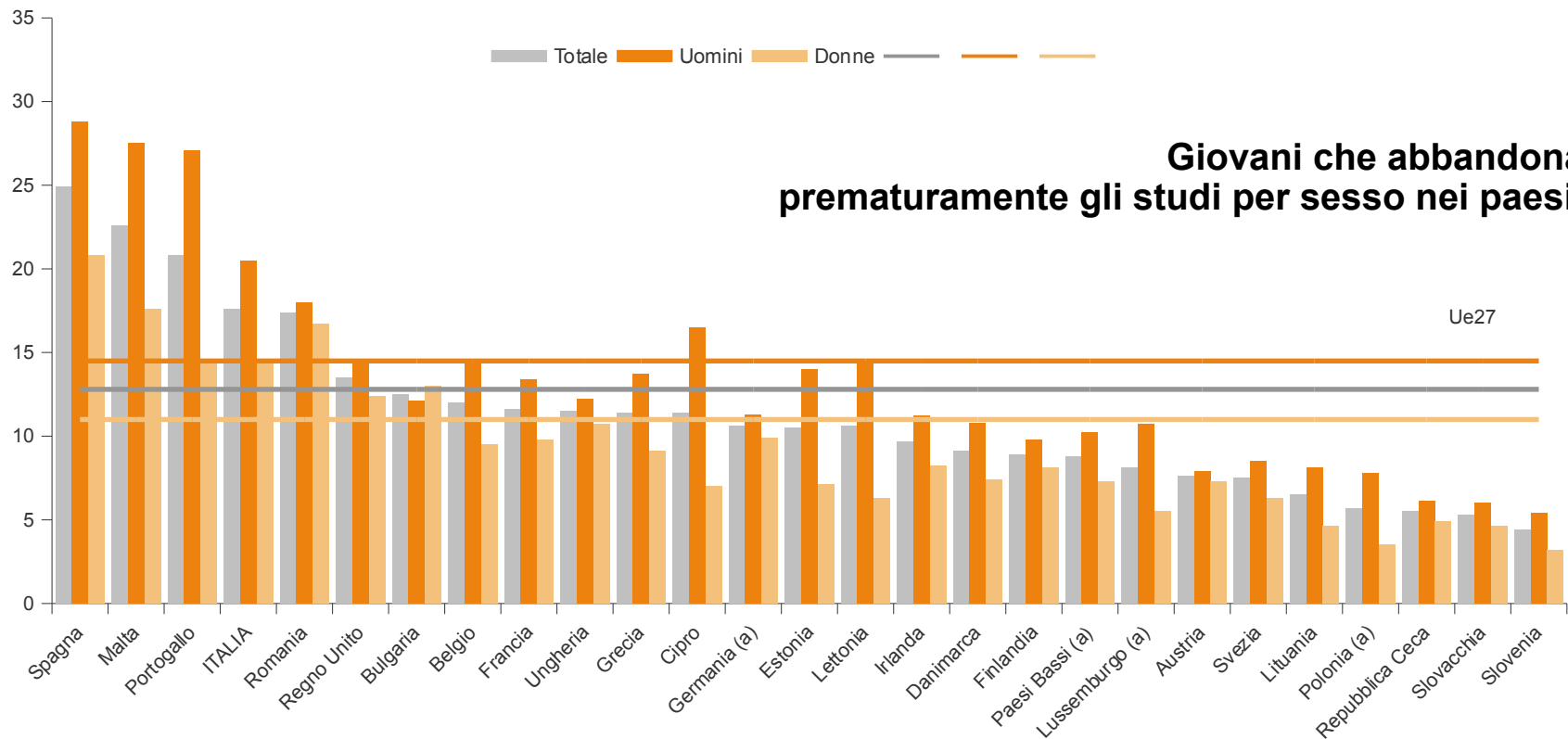
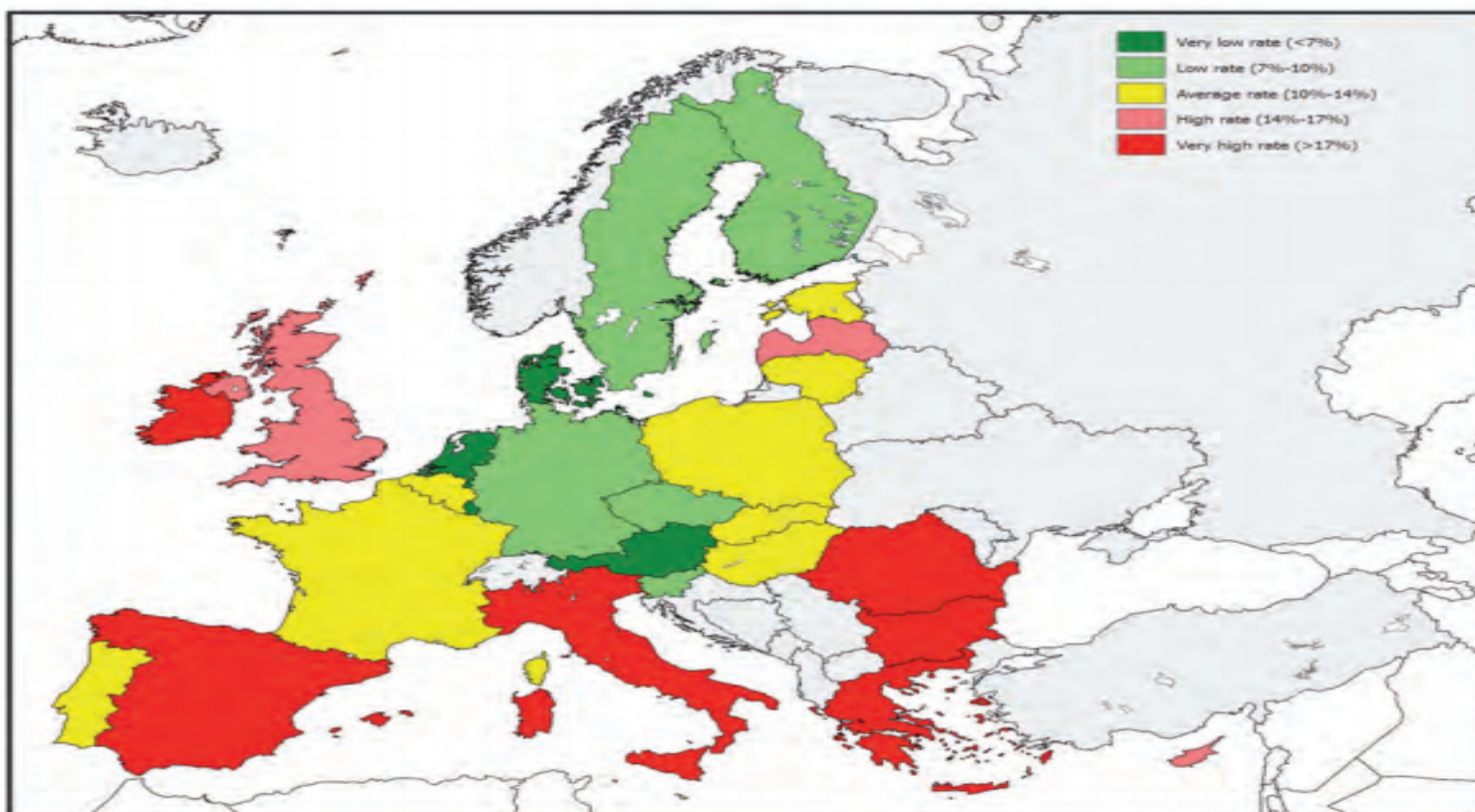
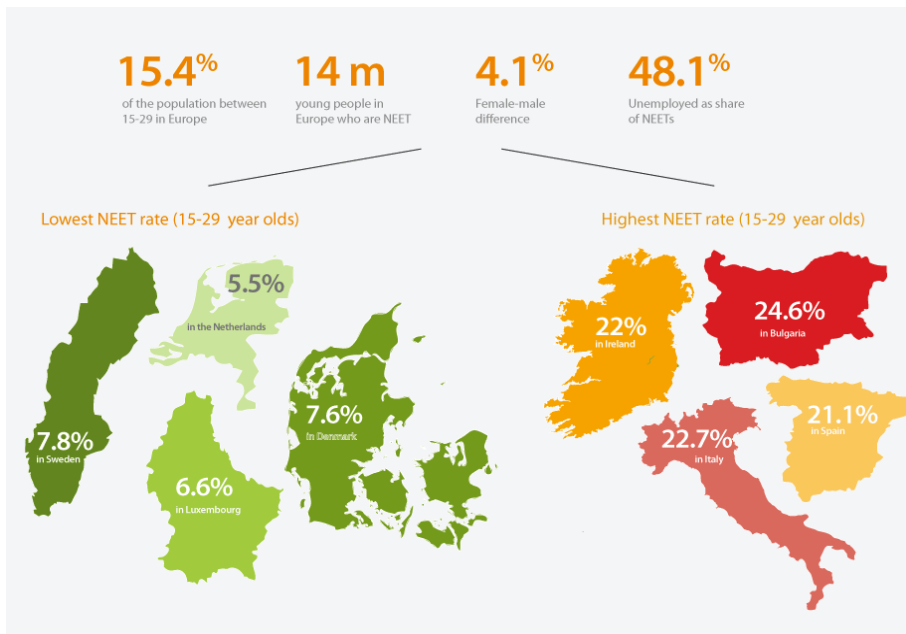


Figure 19: NEET rate in Europe among those aged 15–24 years



Source: Eurostat, 2011



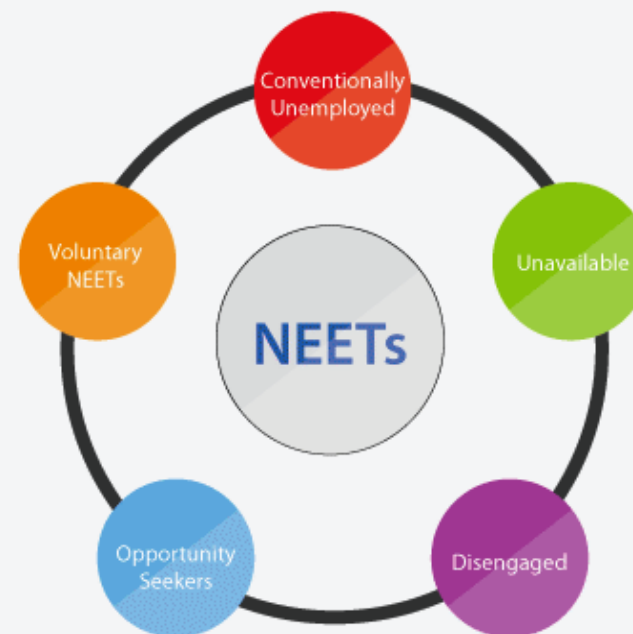
Definition

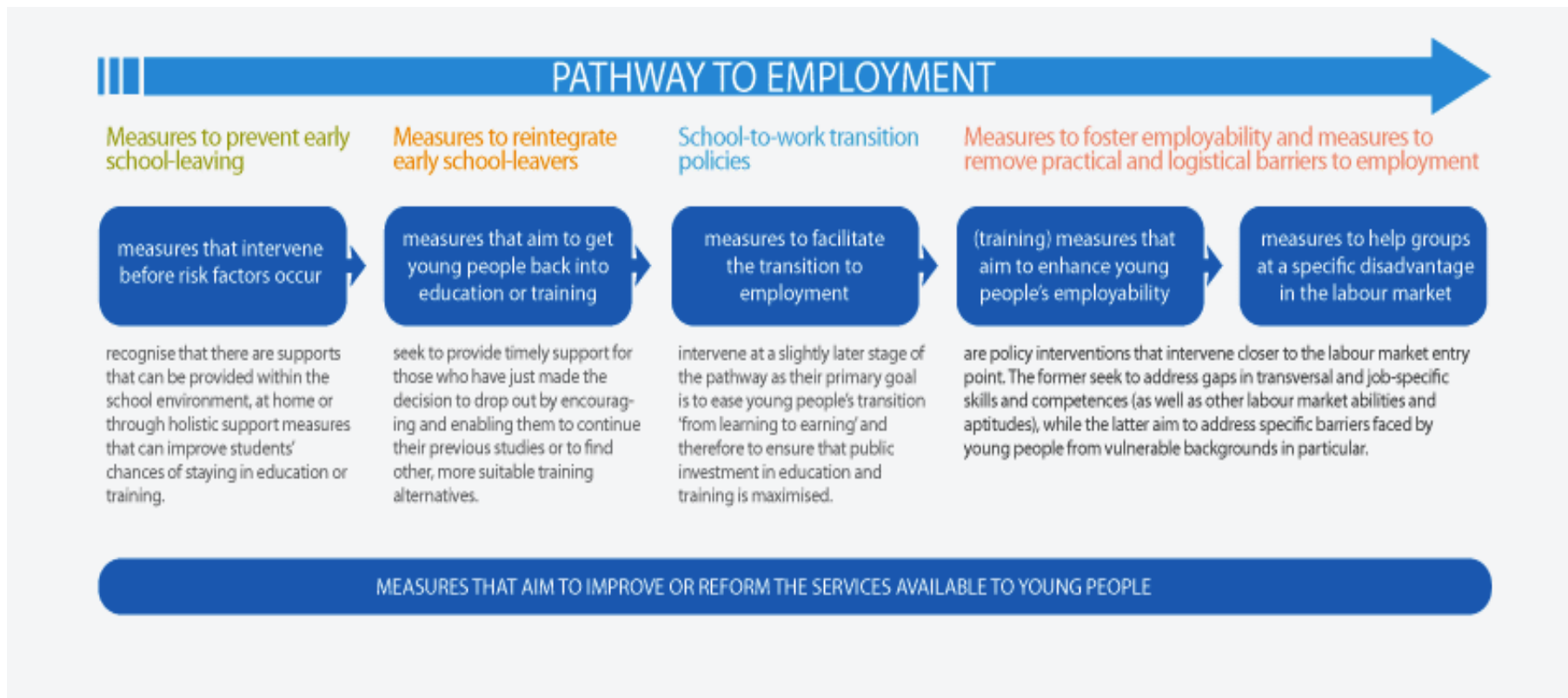
NEETs are young people aged between 15 and 29 years who were not in employment, education or training.

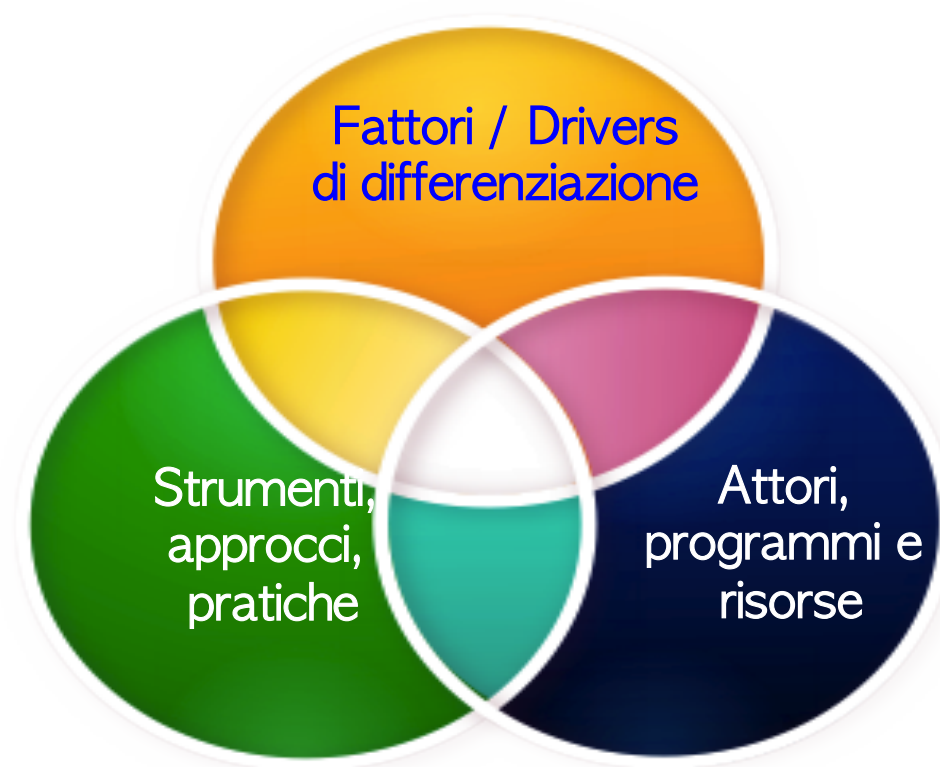
14
million
young people aged
between 15 & 29

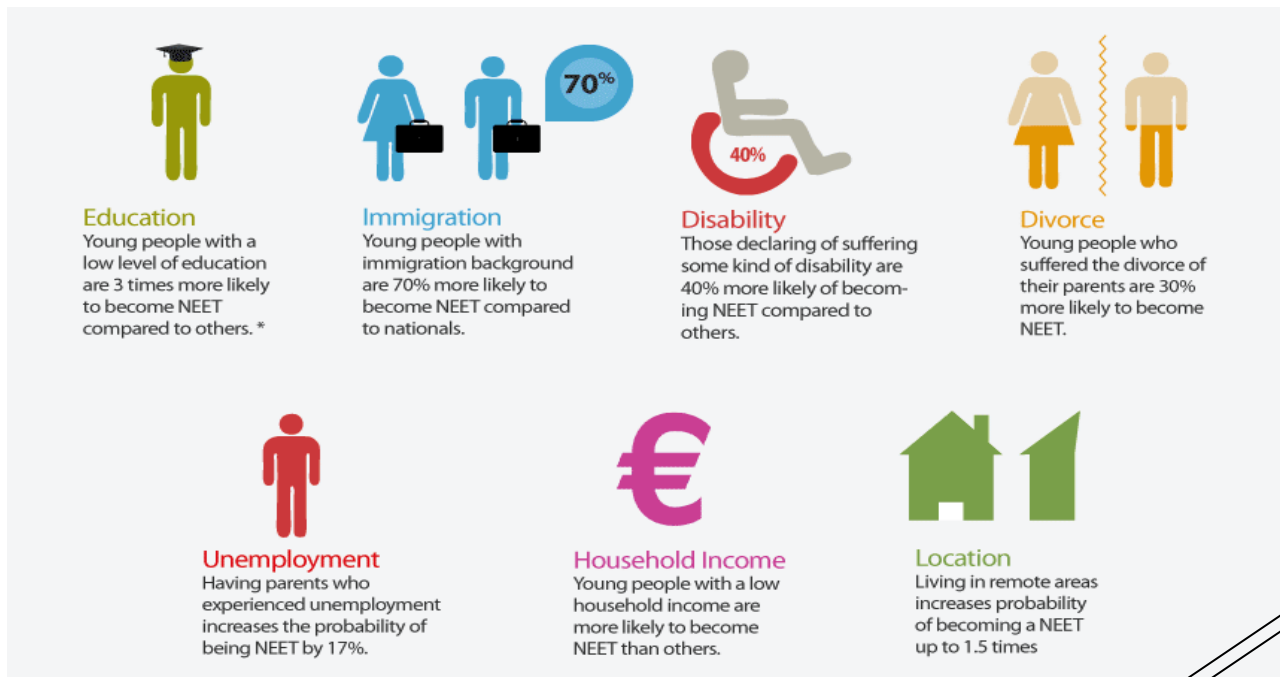
Heterogeneity

Heterogeneity of the NEETs population needs to be addressed when designing policies to re-engage NEETs with the labour market or with education.









Strutturali vs Contingenti
Strutturali vs Funzionamento

*Dimensioni
chiave SAVE*





Grazie per
l'attenzione!

www.saveproject.it
fruggiero@ciofs-fp.org
vcastello@ciofs-fp.org